



WEMA BANK

Market Profile

Date	19 th June, 2026
Current Price (Latest Price)	N30.00K
52 Week Range	12.60/36.00

Wema Share Price Changes

Year to Date	47.06%
Quarter to Date	15.38%
Month to Date	-10.45%
Week to date	-3.23%

Banking Sector Week on Week Returns 19th June, 2026

Bank	% Change
JAIZBANK	-1.10%
STANBIC	-1.21%
STERLINGNG	-1.90%
ETI	-2.26%
WEMA	-3.23%
ACCESSCORP	-7.69%
UBA	-8.14%
FCMB	-8.40%
FIDELITYBK	-10.00%
ZENITHBANK	-11.65%
GTCO	-15.01%
FBNH	-20.29%

Table 1

Wema Bank Plc Share Price Weekly Performance Report: 19th June, 2026

General Market Review

The NGX All-Share Index and Market Capitalization depreciated by 3.59% to close the week at 235,941.27 and ₦151.327 trillion respectively. Similarly, all other indices finished lower while NGX Sovereign Bond closed flat

A total turnover of 3.075 billion shares worth ₦254.614 billion in 287,157 deals was traded this week by investors on the floor of the Exchange, in contrast to a total of 4.964 billion shares valued at ₦207.521 billion that exchanged hands last week in 235,966 deals.

The Financial Services Industry (measured by volume) led the activity chart with 2.074 billion shares valued at ₦64.490 billion traded in 121,981 deals: thus contributing 67.44% and 25.33% to the total equity turnover volume and value respectively. The Services Industry followed with 175.743 million shares worth ₦2.759 billion in 19,590 deals. Third place was the Consumer Goods Industry, with a turnover of 133.375 million shares worth ₦12.680 billion in 30,730 deals.

Trading in the top three equities, namely Access Holdings Plc, Sterling Financial Holdings Company Plc and Jaiz Bank Plc (measured by volume), accounted for 819.234 million shares worth ₦12.247 billion in 21,809 deals, contributing 26.64% and 4.81% to the total equity turnover volume and value respectively.

Sectoral Performance Returns in 19th June, 2026

INDEX	WtD (%)	MtD (%)	YtD (%)
NGX All-Share Index (ASI)	-3.59	-5.77	51.62
NGX Banking Index	-10.49	-12.73	35.77
NGX Insurance Index	-7.22	-7.49	-1.75
NGX Consumer Goods Index	-1.61	-4.24	18.14
NGX Oil/Gas Index	-1.06	-5.72	111.13
NGX Industrial Goods Index	-4.11	-9.25	95.79

Banking Sector Review

Trading activities in the banking sector in the week ended 19th June, 2026 on a strong bearish note as the sector depreciated in market valued by 10.49%. All stocks listed in the banking sector shed market value in the week under review, with First Holdings, GCO, Zenith and Fidelity leading the pack (See Table 1 for full banks performance).

Wema Bank Share Performance Review

Investor's sentiments in the week under-review were bearish with the share price lost 3.23% bringing the year to date at 47.06% in price appreciation.

Open	Close Price	High	Low	Weekly % Change
31.00	30.00	31.90	29.00	-3.23

Volume Analysis

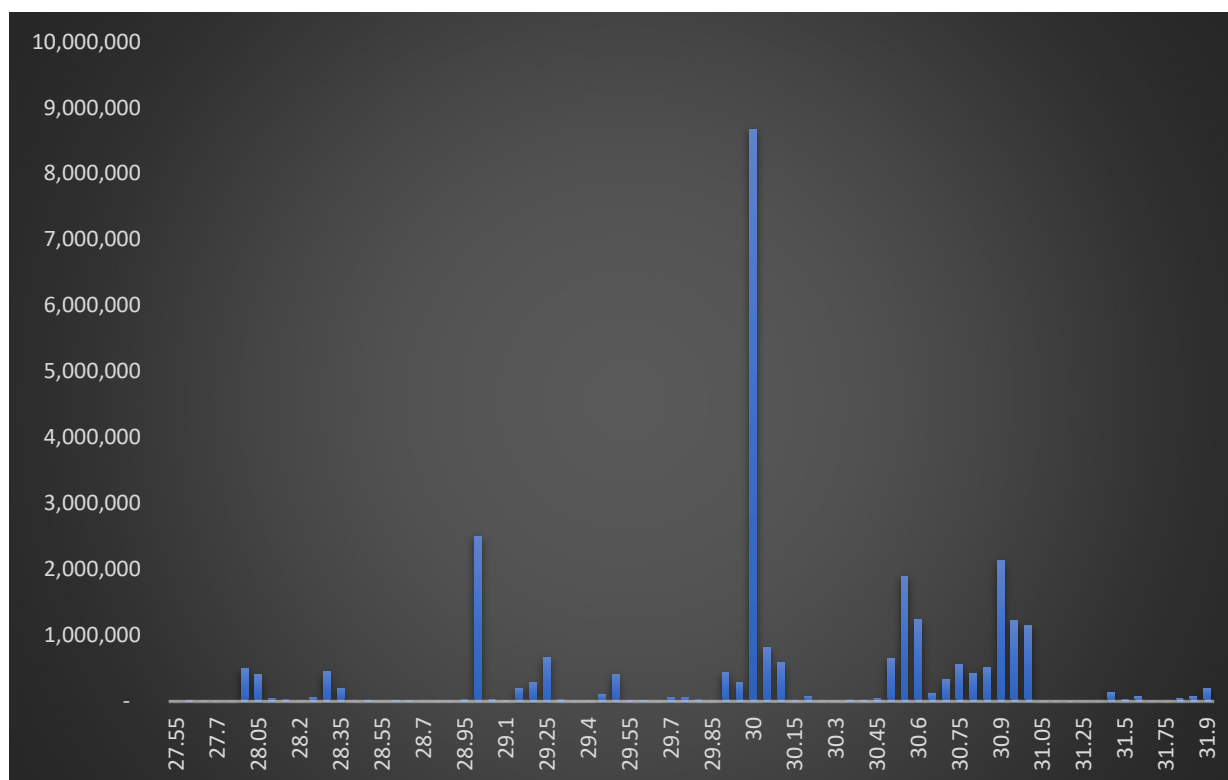
The trading activities in Wema Bank Shares saw 28,059,964 units of shares exchanged hands between buyers and sellers as against previous week's 17,983,395 units of shares valued at N843,543,974.05 in 3,223 deals

Volume Behavior Table

Week Vol.	5 Day Volume Average	WoW Vol. Change
28,059,964	7,329,460	56.03%

Wema Stock Price Tracking

During the week under review, the bank's share price fluctuated within a range of N27.55 (low) to N31.90 (high) as against previous week's N29.95 (low) to N33.00 (high). The most significant trading price for the week with the highest volume traded stood at N30 above previous week's value area of N30. This signifies that the value area remains constant.



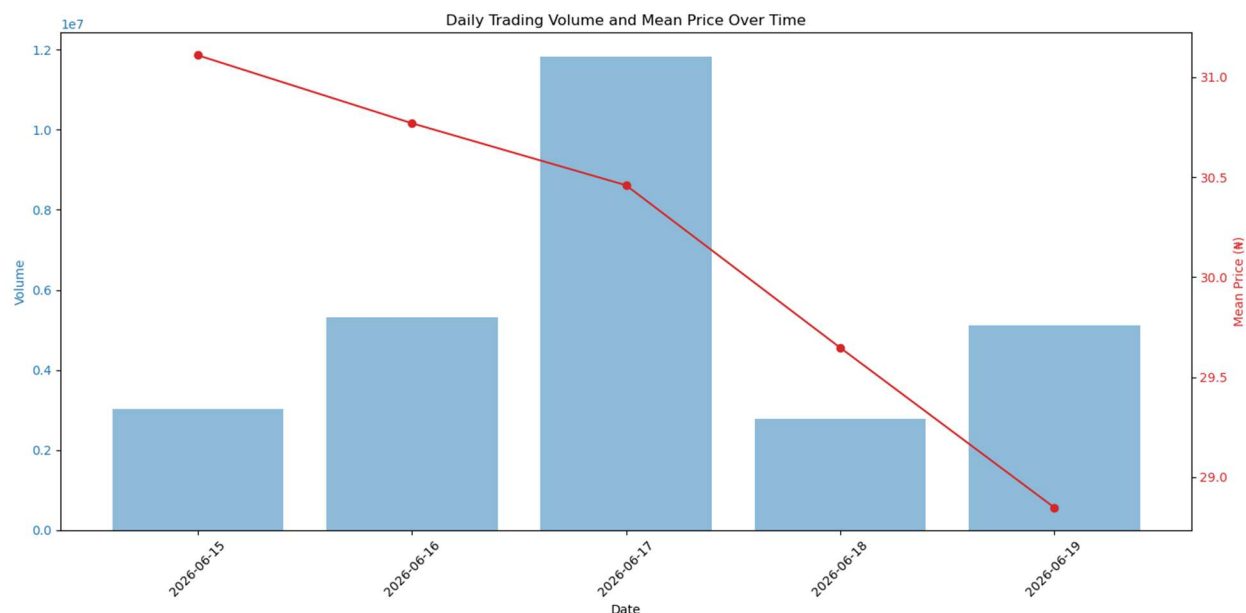
Out of the total transactions, 44 deals resulted in changes to the bank's share price on the exchange, while 3,223 deals did not impact the stock price.

TRUE	44
FALSE	3,179
Total	3,223

The top 10 price-moving transactions with the highest single trade volume reaching 2,795,171 as against previous largest volume of 578,339 units. The smallest trade involved a single unit in one transaction.

Price	Quantities	Value
30.00	2,795,171	83,855,130.00
30.00	900,567	27,017,010.00
29.00	807,238	23,409,902.00
30.00	706,880	21,206,400.00
30.00	500,000	15,000,000.00
30.00	459,052	13,771,560.00
30.00	326,734	9,802,020.00
30.00	307,718	9,231,540.00
30.85	300,000	9,255,000.00
30.90	270,000	8,343,000.00

Wema Bank Plc Short-Term Technical Price Action



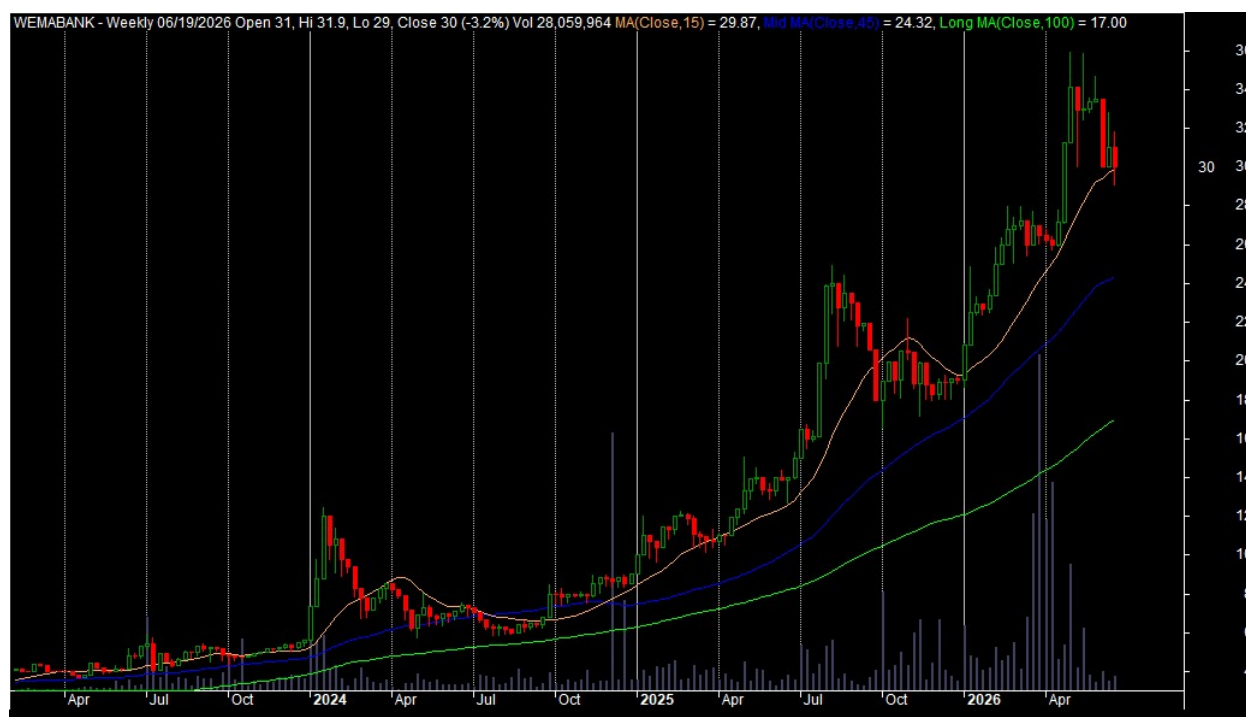
WEMA Bank's shares came under sustained selling pressure during the review period, with the mean trading price declining steadily from approximately ₦31.10 on 15 June to ₦28.85 by 19 June, representing a cumulative loss of about 3.23%. The absence of any meaningful price recovery during the week reflects a persistently bearish sentiment, as the stock recorded lower average prices across each successive trading session.

Trading activity was mixed with market participation strengthening in the first half of the week before moderating thereafter. Daily traded volume increased from approximately 3.0 million shares on 15 June to 5.3 million shares on 16 June, reaching a period high of about 11.8 million shares on 17 June. Notably, this surge in turnover coincided with continued price weakness suggesting heightened distribution activity and stronger selling interest. Volume subsequently declined to approximately 2.8 million shares on 18 June before recovering to 5.1 million shares on 19 June.

The combination of falling prices and elevated mid-week trading volumes indicates that investors were actively reducing positions reinforcing the negative short-term momentum in the stock. Furthermore, the inability of the share price to stabilize despite the moderation in trading activity toward the latter part of the week suggests that demand remained insufficient to absorb selling pressure.

Overall, the trading pattern points to a bearish near-term outlook characterized by declining prices and intermittent spikes in volume. The sharp increase in turnover on 17 June coupled with the continued downward movement in price, is indicative of distribution rather than accumulation. *Unless supported by stronger buying interest or positive catalysts, the stock may continue to face resistance in regaining the ₦30.00 psychological level in the near term.*

TREND ANALYSIS AND OUTLOOK

Key Technical Levels**Major Resistance:** N36.00K**Major Support level:** N25.00K**Intermediate Support:** N28.00K(Source: Amibroker – Weekly Chart Ending 19th June, 2026)**Wema Bank Plc – Weekly Chart Trend Analysis (15th – 19th June, 2026)****Technical Price Action & Momentum Review**

During the week ended June 19, 2026, Wema Bank Plc experienced a renewed bout of selling pressure following the tentative recovery observed in the previous week (June 8 – 11, 2026). The stock closed at approximately ₦30.00, representing a -3.2% week-on-week decline compared to the prior week's +3.3% gain, indicating that the recovery attempt failed to attract sufficient follow-through buying and that profit-taking pressure remains evident near higher price levels.

The stock traded within a weekly range of approximately ₦29.00 – ₦31.90 compared to the previous week's ₦30.00 – ₦32.90 range. This lower trading range reflects weakening short-term momentum as the stock failed to reclaim the ₦33.00 resistance zone and instead drifted back toward the critical ₦30.00 support area.

Unlike the previous week, which was characterized by a modest rebound from oversold conditions following the sharp correction in early June, the June 15–19 period reflected renewed market caution. Price action remained largely defensive throughout the week, with rallies toward ₦31.50–₦32.00 encountering persistent selling pressure. The stock ultimately closed near the lower end of its trading range, suggesting that sellers maintained short-term control of market direction.

From a structural perspective, however, the broader uptrend remains intact. Wema Bank continues to trade above its 15-week MA (~₦29.87), 45-week MA (~₦24.32) and 100-week MA (~₦17.00). While the margin above the short-term moving average has narrowed considerably compared to previous months, the overall alignment of the moving averages continues to support a positive long-term trend structure.

A notable technical development during the week was the repeated testing of the ₦30.00 support zone, which has now emerged as the most important near-term battleground between buyers and sellers. The stock's ability to hold above this level despite ongoing weakness suggests that accumulation interest remains present, although conviction appears considerably lower than during the April rally phase.

Momentum conditions also weakened further. Although the RSI reading is not displayed on the chart, the continued formation of lower highs since the April peak and the inability to sustain rebounds indicate that momentum remains in a corrective phase. The stock has now transitioned from an overbought expansion environment into a more neutral consolidation-to-correction structure.

Conclusion, Outlook & Strategic Implication (Week 19th June, 2026)

Wema Bank Plc entered a more mature consolidation phase during the week ended June 19, 2026 following the failed recovery attempt observed in the previous week. While the stock remains firmly above its major long-term trend indicators and continues to benefit from strong underlying fundamentals, short-term momentum has weakened considerably since the April peak. The repeated testing of the ₦30.00 support region highlights the importance of this level in determining the stock's next directional move. Relative to the previous week, the latest price action reflects renewed caution and a continuation of the ongoing consolidation process rather than a resumption of the bullish expansion phase. Provided the ₦30.00 support zone remains intact, the broader bullish structure should remain preserved; however, a decisive break below this level could trigger a deeper corrective retracement toward lower support zones before the longer-term uptrend resumes.

Recommendations - Hold

Disclaimer: Not Financial Advice, Only for Research Purposes and May Sometimes Be Inaccurate.