



WEMA BANK

Market Profile

Date	11 th June, 2026
Current Price (Latest Price)	N31.00K
52 Week Range	12.60/36.00

Wema Share Price Changes

Year to Date	51.96%
Quarter to Date	19.23%
Month to Date	-7.46%
Week to date	3.33%

Banking Sector Week on Week Returns 11th June, 2026

Bank	% Change
FBNH	11.29%
FCMB	6.25%
WEMA	3.33%
ZENITHBANK	2.73%
JAIZBANK	1.11%
GTCO	0.93%
STANBIC	0.58%
ETI	0.00%
STERLINGNG	-0.63%
ACCESSCORP	-1.20%
UBA	-1.38%
FIDELITYBK	-3.38%

Table 1

Wema Bank Plc Share Price Weekly Performance Report: 11th June, 2026

General Market Review

The market opened for four trading days this week as the Federal Government declared Friday 12, June 2026, as a Public Holiday to commemorate 2026 Democracy Day. The NGX All-Share Index and Market Capitalization appreciated by 0.88% to close the week at 244,738.74 and ₦156.970 trillion respectively. Similarly, all other indices finished higher with the exception of NGX Pension, NGX AFR Bank Value, NGX MERI Growth, NGX MERI Value, NGX Consumer Goods, NGX Lotus II, NGX Industrial Goods, NGX Sovereign Bond and NGX Commodity which depreciated by 0.03%, 1.20%, 0.21%, 1.61%, 0.54%, 0.51%, 1.00%, 2.04% and 0.34% respectively while the which closed flat.

A total turnover of 4.964 billion shares worth ₦207.521 billion in 235,966 deals was traded this week by investors on the floor of the Exchange, in contrast to a total of 3.966 billion shares valued at ₦175.659 billion that exchanged hands last week in 343,587 deals. The Financial Services Industry (measured by volume) led the activity chart with 4.116 billion shares valued at ₦84.607 billion traded in 96,165 deals: thus contributing 82.92% and 40.77% to the total equity turnover volume and value respectively. The Services Industry followed with 232.479 million shares worth ₦4.955 billion in 17,614 deals. Third place was the Industrial Goods Industry, with a turnover of 144.988 million shares worth ₦39.077 billion in 24,775 deals.

Trading in the top three equities, namely Sterling Financial Holdings Company Plc, FCMB Group Plc and Access Holdings Plc and (measured by volume), accounted for 2.883 billion shares worth ₦36.188 billion in 15,533 deals, contributing 58.09% and 17.44% to the total equity turnover volume and value respectively

Sectoral Performance Returns in 11th June, 2026

INDEX	WtD (%)	MtD (%)	YtD (%)
NGX All-Share Index (ASI)	0.88	-2.26	57.27
NGX Banking Index	0.95	-2.5	51.68
NGX Insurance Index	1.63	-0.29	5.89
NGX Consumer Goods Index	-0.54	-2.67	20.08
NGX Oil/Gas Index	0.50	-4.7	113.4
NGX Industrial Goods Index	-1.00	-5.36	104.19

Banking Sector Review

Trading activities in the banking sector in the week ended 11th June, 2026 on a slightly bullish note as the sector appreciated in market valued by 0.95%. On the gainer's side are First Holdings, FCMB, Wema, among others while Fidelity, UBA led the losers pack in the week under review. ETI ended the week unchanged (See Table 1 for full banks performance).

Wema Bank Share Performance Review

Investor's sentiments in the week under-review were bullish with the share price gained 3.33% bringing the year to date at 51.96% in price appreciation.

Open	Close Price	High	Low	Weekly % Change
30.00	31.00	32.90	30	3.33

Volume Analysis

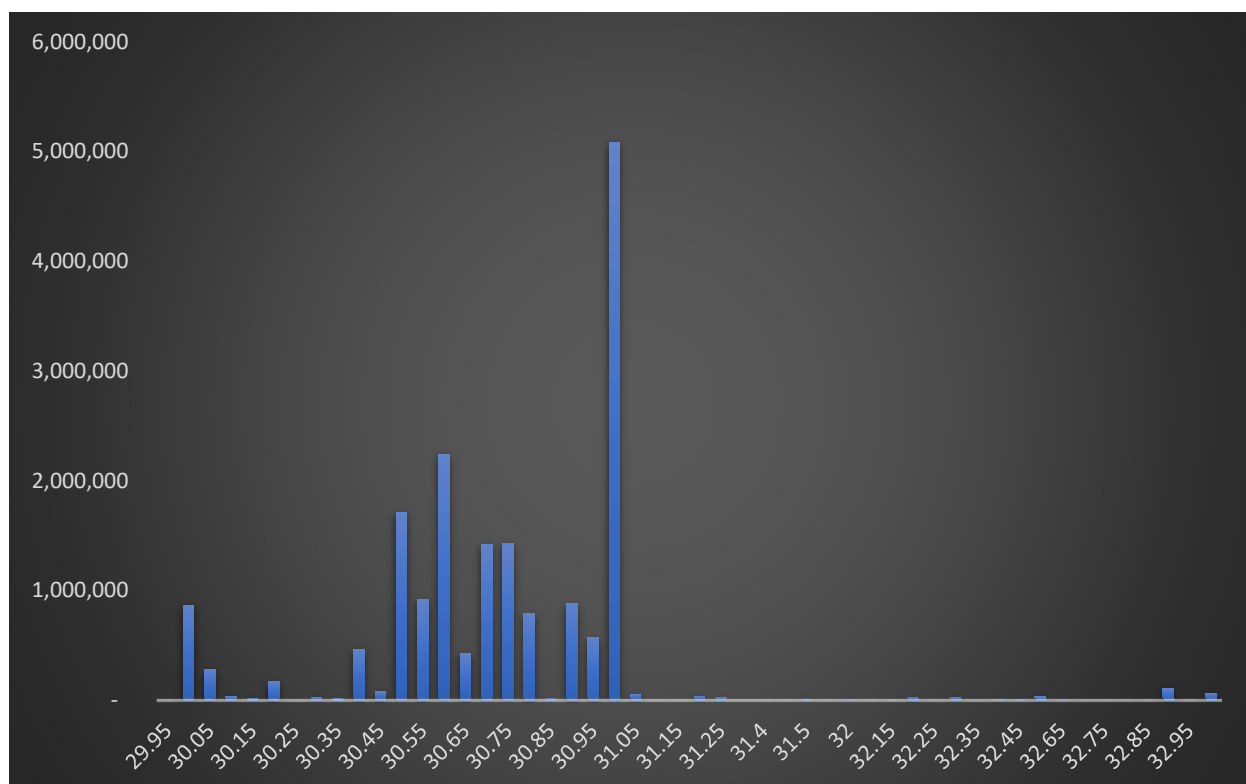
The trading activities in Wema Bank Shares saw 17,983,395 units of shares exchanged hands between buyers and sellers as against previous week's 36,647,296 units of shares valued at N552,971,174.55 in 2,584 deals

Volume Behavior Table

Week Vol.	5 Day Volume Average	WoW Vol. Change
17,983,395	7,329,460	-50.93%

Wema Stock Price Tracking

During the week under review, the bank's share price fluctuated within a range of N29.95 (low) to N33.00 (high) as against previous week's N29.10 (low) to N33.75 (high). The most significant trading price for the week with the highest volume traded stood at N31 above previous week's value area of N30. This signifies that the value area appreciated.



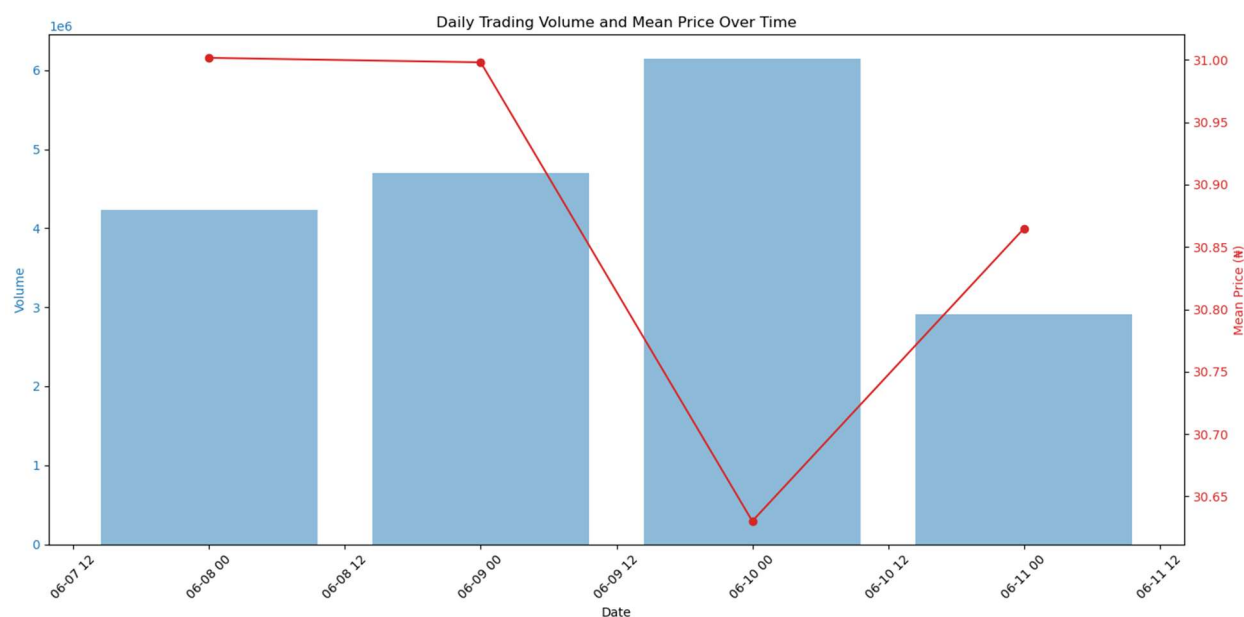
Out of the total transactions, 49 deals resulted in changes to the bank's share price on the exchange, while 2,584 deals did not impact the stock price.

TRUE	49
FALSE	2,535
Total	2,584

The top 10 price-moving transactions with the highest single trade volume reaching 578,339 as against previous largest volume of 500,000 units. The smallest trade involved a single unit in one transaction.

Price	Quantities	Value
30.75	578,339	17,783,924.25
30.75	360,787	11,094,200.25
30.40	300,000	9,120,000.00
30.00	300,000	9,000,000.00
30.70	295,731	9,078,941.70
30.50	286,464	8,737,152.00
31.00	270,191	8,375,921.00
31.00	270,000	8,370,000.00
31.00	253,600	7,861,600.00
30.60	250,000	7,650,000.00

Wema Bank Plc Short-Term Technical Price Action



WEMA Bank's share price remained largely range-bound during the review period, demonstrating resilience despite fluctuations in trading activity. The stock traded at approximately ₦31.00 on both 8 and 9 June, indicating a stable opening to the week. However, the mean price declined to ₦30.63 on 10 June before recovering to ₦30.86 on 11 June, suggesting that the mid-week weakness attracted bargain hunters and helped restore part of the lost value.

Trading activity showed a contrasting trend, with volumes increasing steadily from approximately 4.2 million shares on 8 June to 4.7 million shares on 9 June, before peaking at about 6.2 million shares on 10 June. The increase in turnover coincided with the sharpest price decline during the period, implying heightened selling pressure and profit-taking activity. Nevertheless, trading volume moderated to approximately 2.9 million shares on 11 June as the stock rebounded, indicating that selling momentum had eased toward the close of the review period.

The relationship between volume and price movement suggests a temporary distribution phase rather than a sustained deterioration in investor sentiment. While the spike in trading activity on 10 June exerted downward pressure on the share price, the subsequent recovery in price despite lower turnover points to the emergence of support around the ₦30.60–₦30.70 range.

Overall, WEMA Bank ended the period with a relatively stable pricing profile, supported by a rebound in the final trading session. The moderation in volume alongside recovering prices may indicate improving market confidence, although sustained buying interest will be required for the stock to retest and break above the ₦31.00 level in subsequent sessions.

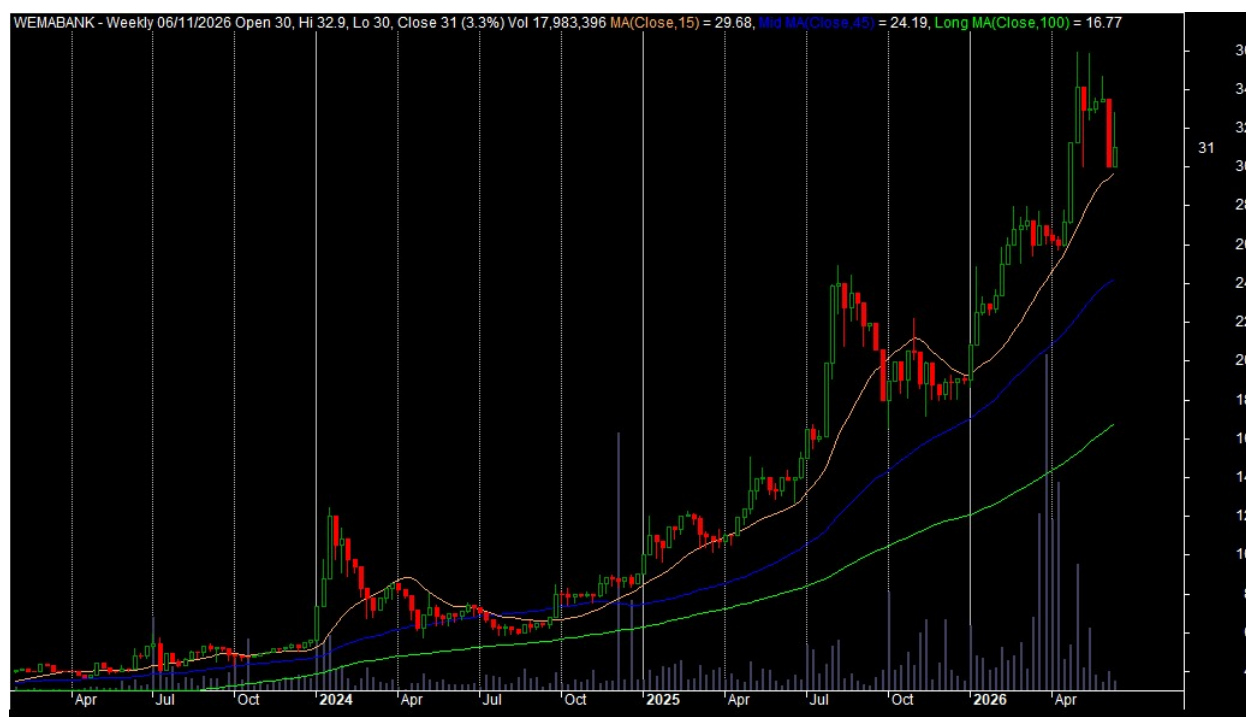
TREND ANALYSIS AND OUTLOOK

Key Technical Levels

Major Resistance: N36.00K

Major Support level: N25.00K

Intermediate Support: N28.00K

(Source: Amibroker – Weekly Chart Ending 11th June, 2026)Wema Bank Plc – Weekly Chart Trend Analysis (8th – 11th June, 2026)

Technical Price Action & Momentum Review

During the shortened trading week ended June 11, 2026, Wema Bank Plc staged a modest technical recovery following the sharp corrective decline recorded in the previous week (June 1 – 5, 2026). The stock closed at approximately ₦31.00, representing a +3.3% week-on-week gain compared to the prior week's -10.4% decline, suggesting that buyers returned to defend key support levels after the recent bout of profit-taking.

The stock traded within a weekly range of approximately ₦30.00 – ₦32.90, compared to the previous week's ₦30.00 – ₦33.50 range. Although the trading range remained relatively volatile, price action demonstrated greater stability around the ₦30.00 support zone, which successfully absorbed selling pressure and prevented a deeper retracement toward the ₦28.00 support region.

Unlike the previous week, where persistent selling pressure pushed the stock to a weekly close at its lows, the June 8–11 period was characterized by an early recovery attempt as the stock rebounded from ₦30.00 and advanced toward ₦33.00 before encountering renewed resistance. While some profit-taking emerged near the end of the period, the stock nevertheless closed above the prior week's low, indicating that bearish momentum has moderated.

From a structural perspective, the broader bullish trend remains intact despite the recent volatility. Wema Bank continues to trade comfortably above its 15-week MA (~₦29.68), 45-week MA (~₦24.19) and 100-week MA (~₦16.77). The preservation of these long-term trend relationships suggests that the recent weakness remains corrective within a larger uptrend rather than signaling a fundamental deterioration in market structure.

Importantly, the stock successfully reclaimed and held above the short-term moving average during the week, suggesting that the market may be attempting to establish a near-term base following the sharp correction witnessed in early June.

Momentum indicators also improved relative to the previous week. While RSI is not displayed numerically on this chart, price action suggests that the prior momentum reset has stabilized. The market appears to be transitioning from an overbought correction phase into a more balanced consolidation environment where buyers and sellers are gradually finding equilibrium.

Conclusion, Outlook & Strategic Implication (Week 11th June, 2026)

Wema Bank Plc demonstrated encouraging signs of stabilization during the week ended June 11, 2026, following the sharp corrective decline recorded in the previous week. The stock successfully defended the critical ₦30.00 support level and posted a modest recovery, indicating that selling pressure has moderated and that buyers remain active at lower price levels. Although the stock remains below its recent peak near ₦36.00 and further confirmation is required before a sustained uptrend can resume, the broader technical structure remains constructive. Relative to the previous week, the latest price action reflects a transition from correction to stabilization, with the market potentially laying the foundation for a renewed recovery phase if support levels continue to hold and buying participation gradually improves.

Recommendations - Hold

Disclaimer: Not Financial Advice, Only for Research Purposes and May Sometimes Be Inaccurate.